



VPSS 4ie 2D-CAD

V3.03.04
Release Note

25 OCT 2025
AMADA CO., LTD.



- Basic Operation Environment
- Released Function List
- Precautions and Limitations on use

Basic Operation Environment



■ Recommended Hardware

Processor(CPU)	Intel Core i5 or higher
Memory	More than 8GB
Hard Disk	More than 30GB

■ Basic Software

OS	Version	32 bit	64 bit
	Windows 10 Pro/Enterprise	N/A	OK
	Windows 11 Pro/Enterprise	N/A	OK
.NET Framework	3.5, 4.6.2		

■ Operation Mode

Server Supported	SDDJ ※vSDD can be saved via PD
Supported Language	English, Japanese, Chinese (Simplified), Chinese (Traditional), Korean, Thai, German, French, Italian, Spanish * There are restrictions depending on the OS. For details, see Restrictions. Not support:Portuguese, Polish, Russian, Hungarian, Vietnamese, Indonesian
System Unit	Metric(Not support inch)
Decimal comma environment	Not supported
AP100 System[SDD Support]	Impossible.※Available only for PCL servers & clients (Supported PCL version: V7.00.03 or higher) Mandatory SDD servers in the box or in a separate PC.

There are no improvements that affect the screen operation or output in this version.

Precautions and Limitations on use (1/2)

PD: Production Designer

PX: Parameter Explorer

DX: Data Explorer



#	Category	Content	Planning date
1	Install	Installed by VPSS 4ie integrated installer. 2D-CAD cannot be installed if AP100 is installed on the destination computer. After installation you need to set the SDD server.(See next page for details)	Not support *Specification
2	SDD	You must be connected to the SDD server.	Not support *Specification
3	AI Drawing Assistance	Automatic recognition of dimension lines is only available for vertical and horizontal dimensions.(Slanted dimensions, angular dimensions, chamfering instructions, table coordinate instructions, etc. are not supported.)	Not support *Specification
4	AI Drawing Assistance	You cannot return to AI Drawing Assistance application after you use AI Drawing Assistance to write to 2D-CAD.	Not support *Specification
5	AI Drawing Assistance	The background of Image output from AI Drawing Assistance is not available in AP100JWL/AP100LE.	Not support *Specification
6	AI Drawing Assistance	Two or more part diagrams with the background of Image output from AI Drawing Assistance cannot be opened at the same time. Close Part Drawing and move to AI Drawing Assistance.	Not support *Specification
7	AI Drawing Assistance	When using the Merge All command or parts diagram OnePushSolid from Part Drawing command with data that has AI Drawing Assistance guidelines, it is necessary to hide the AI Drawing Assistance guideline layer.	Not support *Specification
8	PCL connected kit	PCL connected kit can be used only with the account that contains PCL. You cannot use PCL by switching accounts.	Not support *Specification

Precautions and Limitations on use (2/2)

PD: Production Designer

PX: Parameter Explorer

DX: Data Explorer



#	Category	Content	Planning date
9	2D-CAD AI Drawing Assistance	The application language depends on the OS language.	Not support *Specification
10	2D-CAD	Due to improvements to the tool menu, the [OnePushSolid] command button will no longer function. If unnecessary buttons remain after upgrading, they must be deleted. (See next page for details)	Not support *Specification
11	2D-CAD	Backup/restore using the total backup tool is only possible on the same PC and in an environment with the same user name.	Not support *Specification
12	AI Drawing Assistance	If the paper size exceeds the specified size below when converting the drawing to the actual scale, when moving from the "AI Drawing Assistance" function to "2D-CAD", the drawing underlay in the parts drawing view of "2D-CAD" may be changed. Only the guidelines are displayed without displaying them. Standard size: Approximately 7900mm long x 7900mm wide	Not support *Specification
13	AI Drawing Assistance	The intersection of lines drawn with Line command of Smart Tracing cannot be clicked when drawing with Smart Tracing.	Undecided
14	AI Drawing Assistance	If any dimension are deleted after Auto Trace, the auto traced lines are deleted.	Undecided

#2 Install (1/2)

Support Details

After installing VPSS 4ie 2D-CAD, you need to configure the SDD server. The steps to set is as follows.

<Setup guidance>

1. Before starting "2D-CAD" and "Data Manager", please check if the SDD server can be referenced in Explorer. (See Fig. 1)
2. After installing VPSS 4ie 2D-CAD, when you first start "2D-CAD" or "SDD DataManager", the dialog in Fig. 2 will be displayed. Please push the OK button.
3. Next, the dialog shown in Fig. 3 will be displayed. Enter the server name and push the OK button.
4. Fig. 4 is displayed by the PC. Please push the OK button.

The settings are now complete.

Fig. 1

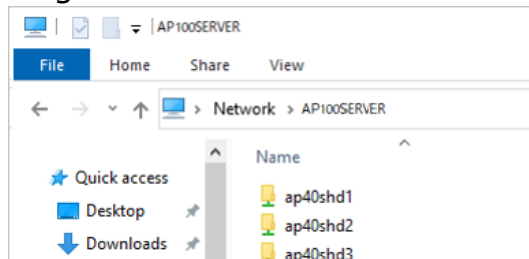


Fig. 2

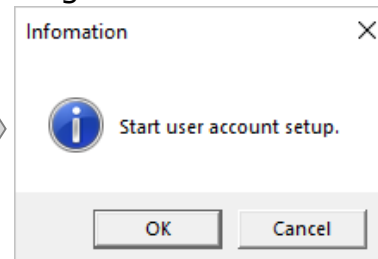


Fig. 3

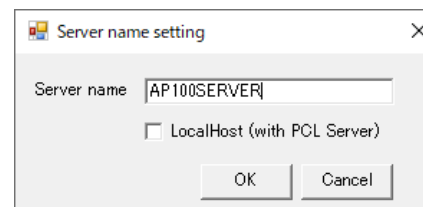
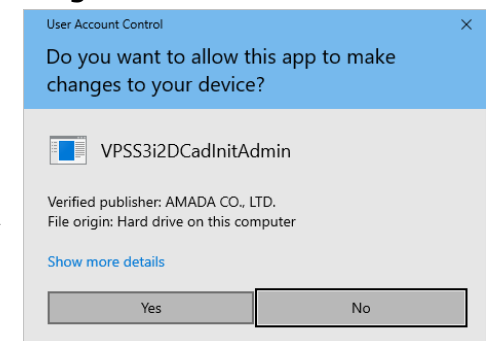


Fig. 4



#2 Install (2/2)

The steps to change the SDD server are as follows.

<Change guidance>

1. Start "SDD MntCenter" from the start menu. (See Fig. 1)
2. Please push the Change button. (See Fig. 2)
3. The Change Reference Server dialog is displayed. Enter the new server name and push the OK button. (See Fig. 2)
4. The connection server name has been changed. (See Fig. 3)

The changes are now complete.

Fig. 1

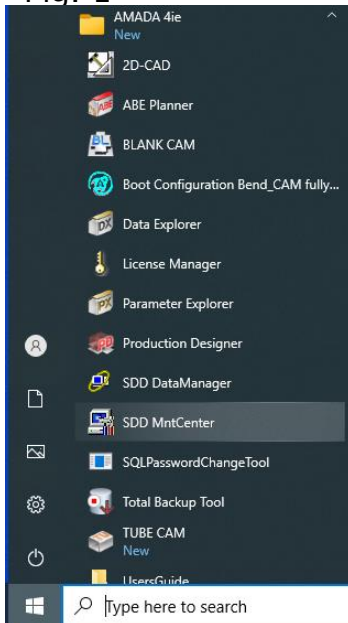


Fig. 2

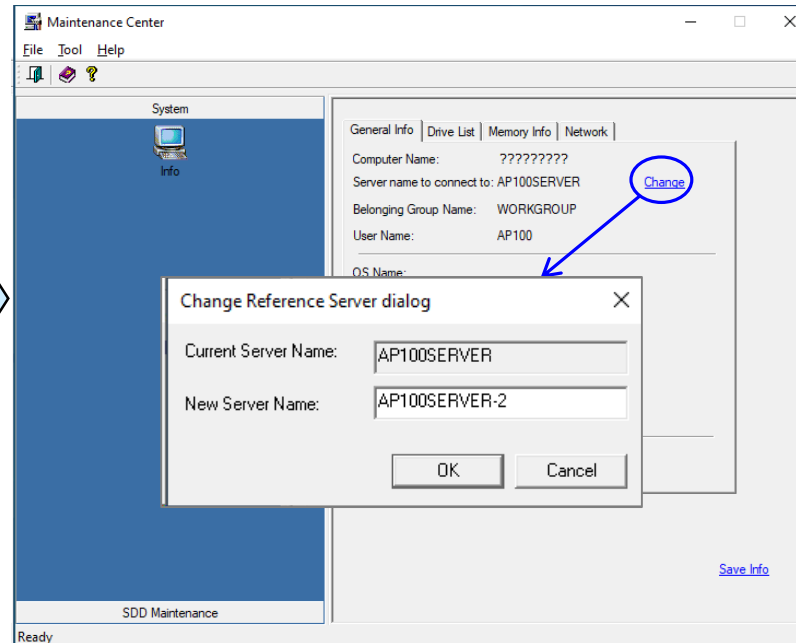
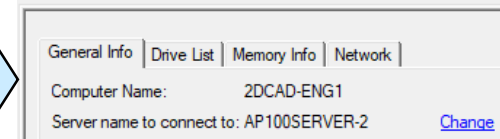


Fig. 3



Support
Details

#10 How to delete the [OnePushSolid] button

Support Details

Due to improvements to the tool menu, the [OnePushSolid] command button will no longer function. If unnecessary buttons remain after upgrading, they must be deleted.



[OnePushSolid] command button (Fig.1)

To delete unnecessary command buttons, follow the steps below:

<Delete steps>

1. Right-click on the icon to launch the [command Definition]. (See Fig. 2)
2. You can delete unnecessary command icons by dragging them from the toolbar and dropping them outside the toolbar. (See Fig. 3)

Fig. 2

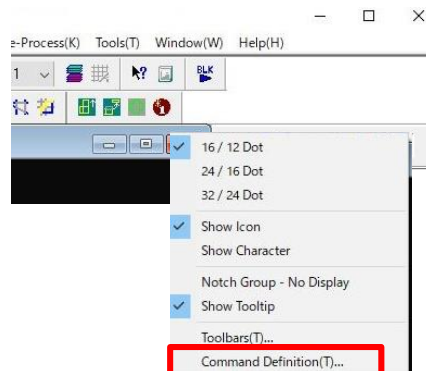
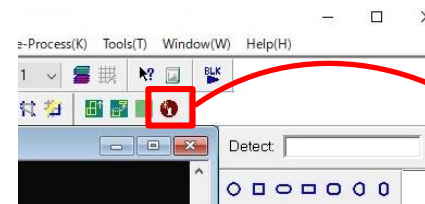


Fig. 3



Drag (left click and hold)

Drop (release left click)